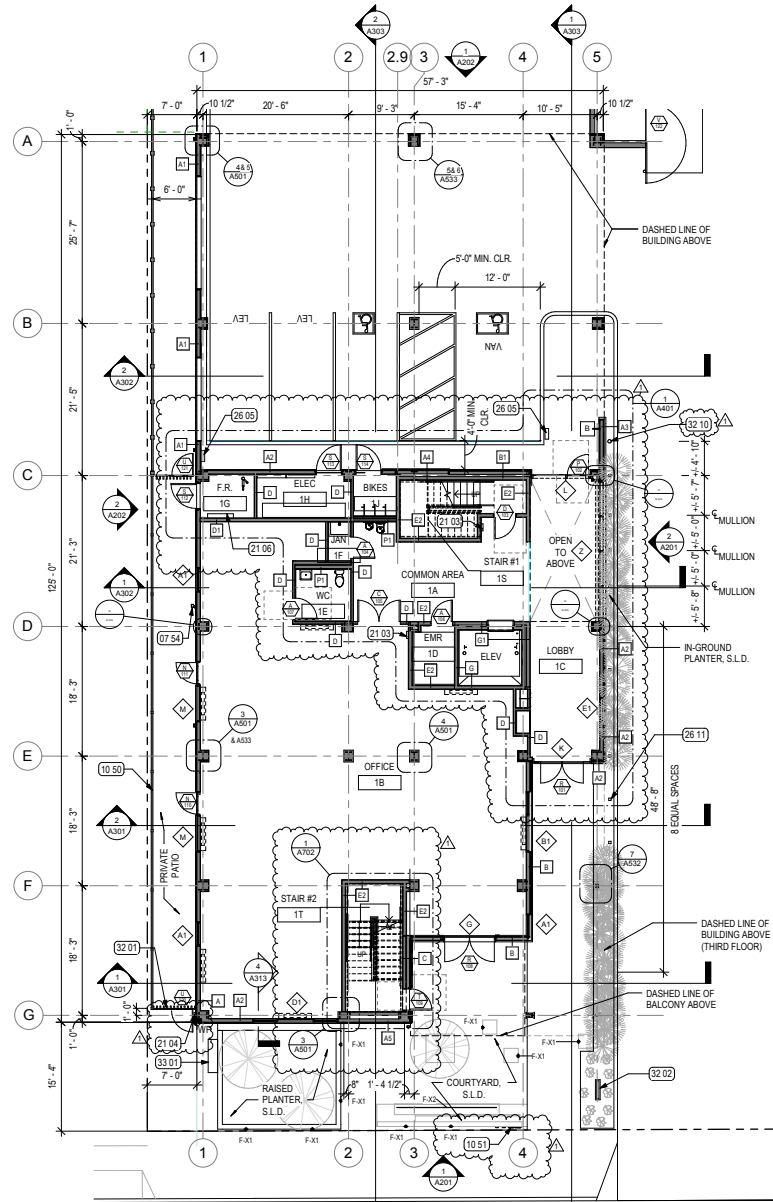


GENERAL PLAN SHEET NOTES

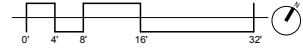
1. REFER TO ENLARGED PLAN DETAILS FOR LAYOUT DIMENSIONS.
2. REFER TO ENLARGED PLAN DETAILS FOR ADDITIONAL PARTITION TYPES.
3. S.E.D. FOR LIGHT FIXTURES SCHEDULE
4. MAINTAIN A MINIMUM OF 8'-2" VERTICAL CLEARANCE AT ENTRANCES TO AND WITHIN PARKING GARAGE TO ANY OVERHEAD OBSTRUCTION (I.E. PIPES, LIGHT FIXTURES, SIGNS, ETC.)
5. GLAZING AND GLAZED DOORS MUST HAVE LABELS FOR THE U-FACTORS AND SHGC-FACTORS THAT ARE REQUIRED BY THE ENERGY DOCUMENTATION. SEE THE ENERGY COMPLIANCE INFORMATION LOCATED ON SHEETS 0055 & 0056 FOR THE REQUIRED VALUES.

KEYNOTE LEGEND	
Key Value	Keynote Text
07 54	PAINTED CAST IRON BOOT, S.C.D.
10 50	GREEN SCREEN TRELLISAGE
10 51	HALO-LIT ALUM. ADDRESS NUMERALS
21 03	SEMI-RECESSED FIRE EXTINGUISHER & CABINET (MIN. SIZE 2-A-10-BC)
21 04	WALL MOUNTED LOCK BOX FOR FIRE DEPARTMENT ACCESS
21 05	EMERGENCY RESPONDER RADIO COVERAGE EQUIPMENT ROOM
26 05	CONDUIT & J-BOX FOR FUTURE EV CHARGING STATION
26 11	LIGHT BOLLARDS, CONC. FOOTING, TYP. SEE A101
32 01	PAINTED METAL FENCE & SECURITY GATE
32 02	DN MONUMENT SIGN
32 10	PARKING ACCESS SECURITY CHAIN & BOLLARDS
33 01	WATER SERVICE BACKFLOW PREVENTER, S.C.D.



MINNESOTA AVE.

1 01 - First Floor Plan
A101 1/8" = 1'-0"



COPYRIGHT © 2019
THE DRAWING IS THE PROPERTY OF STUDIO KDA. ALL RIGHTS RESERVED. THE PROPERTY OF STUDIO KDA. PERMISSION TO USE OF THIS DOCUMENT IS GRANTED BY ARCHITECT ONLY BY WRITTEN AGREEMENT WITH STUDIO KDA.

**1133
MINNESOTA
AVENUE**

1133 Minnesota Ave
San Jose, CA 95128



**CONSTRUCTION
DOCUMENTS**

PROJECT ISSUE RECORD	
DATE	DESCRIPTION
06/18/19	DD PRICING SET
08/07/19	DD BID ADDENDUM
11/12/19	PLAN CHECK
1 02/22/19	REVISION 01

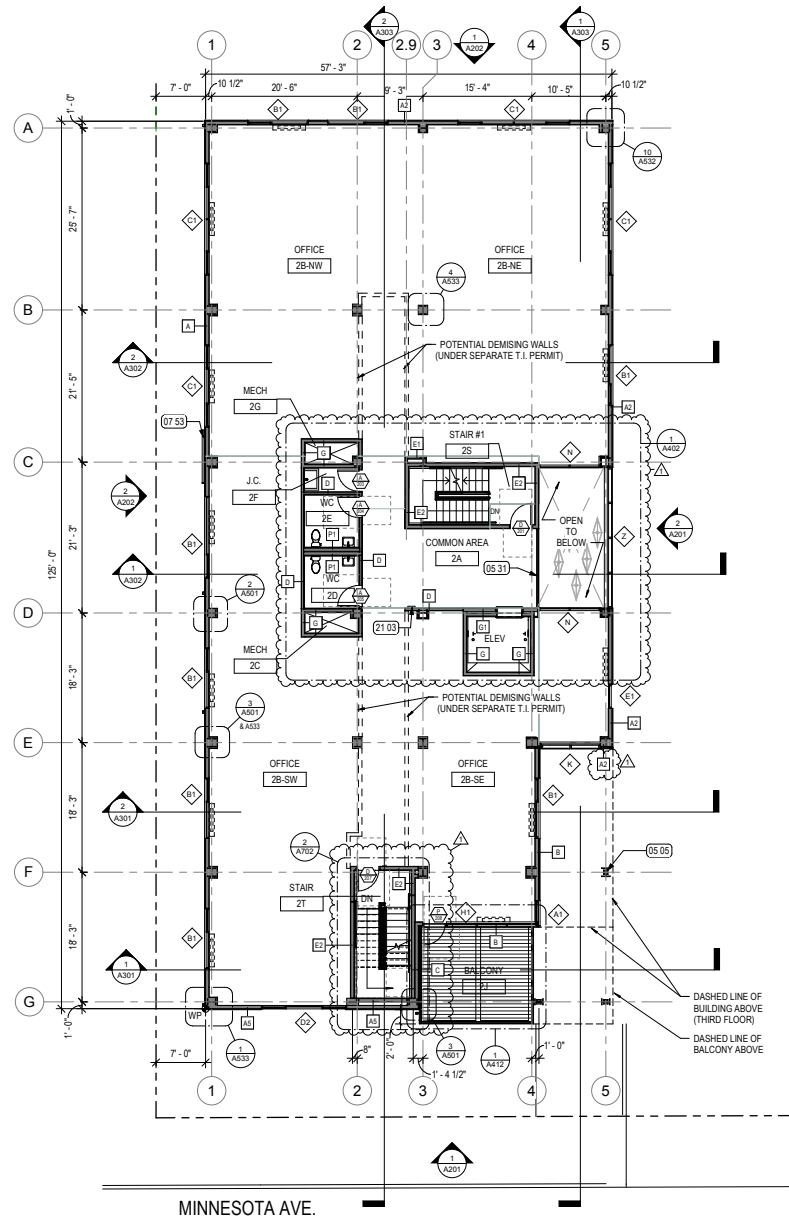
PROJECT #: 9091
ISSUE DATE: 02/22/19
FIRST FLOOR PLAN

A101

GENERAL PLAN SHEET NOTES

1. REFER TO ENLARGED PLAN DETAILS FOR LAYOUT DIMENSIONS.
2. REFER TO ENLARGED PLAN DETAILS FOR ADDITIONAL PARTITION TYPES.
3. S.E.D. FOR LIGHT FIXTURES SCHEDULE
4. MAINTAIN A MINIMUM OF 8'-2" VERTICAL CLEARANCE AT ENTRANCES TO AND WITHIN PARKING GARAGE TO ANY OVERHEAD OBSTRUCTION (I.E. PIPES, LIGHT FIXTURES, SIGNS, ETC.)
5. GLAZING AND GLAZED DOORS MUST HAVE LABELS FOR THE U-FACTORS AND SHGC-FACTORS THAT ARE REQUIRED BY THE ENERGY DOCUMENTATION. SEE THE ENERGY COMPLIANCE INFORMATION LOCATED ON SHEETS G050 & G051 FOR THE REQUIRED VALUES.

KEYNOTE LEGEND	
Key Value	Keynote Text
05 05	ARCHITECTURALLY EXPOSED STRUCTURAL STEEL COLUMN WITH [06 07] WOOD CLADDING, S.S.D.
05 31	INTERIOR METAL & GLASS GUARDRAIL
07 53	PAINTED GSM RVL_TYP
21 03	SEMI-RECESSED FIRE EXTINGUISHER & CABINET (MIN SIZE 2A:10-B)



1 02 - Second Floor Plan
A102 1/8" = 1'-0"



PROJECT ISSUE RECORD	
DATE	DESCRIPTION
06/15/19	DD PRICING SET
08/07/19	DD BID ADDENDUM
11/15/19	PLAN CHECK
1 02/22/19	REVISION 01

PROJECT #:

ISSUE DATE:

SECOND FLOOR PLAN

